

Casters · Wheels · Lifts · Bins · Carts · Hand Trucks · Rivet Rack · Bulk Bins · Pallet  
Jacks · Rubbermaid · Bulk Storage · Hand Truck Parts · Dock Equipment · Wire Shelving



# *The* **Caster Guy**

A Division of Garland's Inc.

The Caster Guy  
1450 Radisson St | Green Bay, WI 54302  
Toll free: 800.427.2118 | Phone: 920.432.2928  
Fax: 920.432.8065  
[www.thecasterguy.com](http://www.thecasterguy.com)

## About Us

The Caster Guy is located in beautiful Green Bay Wisconsin. Our company has been in business since 1984 and The Caster Guy website began in 2009. We distribute casters, wheels, and related accessories all over the United States to homeowners as well as all business types. We sell via the web, phone, and to walk in customers.

The Caster Guy was created to ensure that potential customers from coast to coast are able to reap the same benefits that our local customers have enjoyed for years.

Our mission is to provide you with the best possible experience for your caster, wheel, or related accessory needs. This includes fast friendly service and competitive pricing.

As of July 1st, 2013 The Caster Guy became a division of Garland's Inc., and thus now has access to a full line of material handling products.

Established in Minneapolis, MN, 1944, Garland's has been distributing casters, wheels, shelving, and a wide variety of other material handling products for seventy years. Our strength of service and dedication has allowed our continued growth through the economic hardships of the eighties, and the more recent recession of the 2000's. Our stability has allowed us to expand into markets in Iowa, Colorado, and Wisconsin; giving us the ability to provide greater service to the Midwest.

As one of the top caster distributors in the nation, Garland's Inc. brings the needs of our customers directly to the caster industry's forefront. Being a long standing member of the National Caster Alliance, Garland's Inc. has cultivated close relationships with some of the most prestigious manufacturers in the caster industry. In addition to the thousands of other manufacturers we offer, we proudly represent the entire line of Colson products: Colson, Albion, Shepherd, MedCaster, Jarvis, Faultless, and Pemco.

Our commitment to customer service ensures Garland's is the team member for your business, and its fast paced changing landscape. All our locations have state of the art shipping and receiving departments offering same day shipping, and blind shipments; guaranteeing your customers will always be your customers.

Providing high quality products gives you the dependability and durable performance that you require, and deserve.

Garland's outside sales force provides efficient, concise, professional on-site assistance to meet your needs. Our sales representatives have years of hands-on experience turning unique issues into practical solutions. Your Garland's inside coordinator is just a call away. Each inside salesperson is prepared to help you with specifications, pricing and delivery information.

---

**We are committed to providing the highest caliber of service and quality products in our industry for our customers who rely on us for their material handling needs year after year.**

---



---

1450 Radisson St | Green Bay, WI 54302  
Toll free: 800.427.2118 | Phone: 920.432.2928 | Fax: 920.432.8065  
[www.thecasterguy.com](http://www.thecasterguy.com)



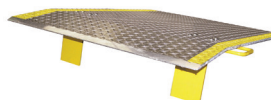
### Casters & Wheels

Albion	Hamilton
Colson	Jarvis
Darcor	Medcaster
Darnell-Rose	R&K Wheels
Faultless	Shepherd



### Hand & Pallet Trucks

B&P Mfg	Magline
BT Pallet Truck	Mobile
Gillis	Raymond Products
Honeyman	Valleycraft
Lakeside	



### Dock Equipment

B&P Mfg	Valleycraft
Campus Crafts	Vestil
Mars Air Doors	Wesco
Save-Ty Yellow	



### Shelving

Intermetro	Rivetier
Edsal	Lyon
Equipto	Pucel
Scotland Rack	Tri-Boro



### Storage Racks

Steel King	Meco
Cardinal	Lyon
Edsal	Scotland Rack
Equipto	Mecalux
Jarke	



### Lockers & Storage

Tennsco	Penco
Lyon	Pinnacle
ASI	Republic
Bradley	Edsal
Hallowell	



### Shop Equipment

Rousseau	Lyon
Cotterman	Just Rite
Durham	Rubbermaid
EGA	Vestil
Gillis	



### Bins & Totes

Akro-Mils	Orbis
Buckhorn	Quantum
Durham	Schaefer
Lewis	



### Platform Trucks

Nutting
B&P Mfg
Magline
Rubbermaid



### Ergonomic & Lifting

Presto	Bishamon
Advance Lift	Jesco
Atlas Lifts	Liftex, Inc.
Autoquip	Morse Mfg
Ecoa	Roll-A-Way

This booklet is only a sample of all the available options and manufacturers. For more please contact Garland's Customer Service.

This chart is designed to provide the user a general comparison of wheel types on a variety of floor surfaces and under a wide range of operating conditions. For specific applications or unusual conditions, please consult factory.

Wheel Selection Guide

Wheel Type	Capacity Range Per Wheel	Temperature Range	Hardness
CUSHION / SOLID RUBBER	Up to 260 lbs.	-30° to +160° F	75 (±) 5 (A)
HARD / SOLID RUBBER	Up to 400 lbs.	-30° to +160° F	75 (±) 5 (D)
WELDED DISC / RUBBER	Up to 250 lbs.	-40° to +160° F	75 (±) 5 (A)
WELDED DISC / POLYURETHANE	Up to 300 lbs.	-40° to +180° F	95 (±) 5 (A)
ADVANTAGE TPR (INCLUDING HEAT / HEALTH)	Up to 675 lbs.	-40° to +180° F	65 (±) 5 (A)
HIGH MODULUS RUBBER	Up to 550 lbs.	-40° to +160° F	65 (±) 5 (A)
FULL PNEUMATIC RUBBER	Up to 470 lbs.	-20° to +160° F	-----
POLYOLEFIN	Up to 900 lbs.	-20° to +180° F	65 (±) 5 (D)
TRITON	Up to 1,500 lbs.	-20° to +180° F	65 (±) 5 (D)
HI-TEMP RESIN	Up to 600 lbs.	-20° to +475° F	75 (±) 5 (D)
MAGNUM POLYURETHANE	Up to 1200 lbs.	-40° to +180° F	Choices
POLYLOC GREY OR BLUE POLYURETHANE	Up to 1,000 lbs.	-30° to +180° F	95 (±) 5 (A)
SOLID ELASTOMER	Up to 1,250 lbs.	-40° to +230° F	73 (±) 5 (D)
MOLDON RUBBER / ALUMINUM CORE	Up to 500 lbs.	-40° to +160° F	75 (±) 5 (A)
MOLDON POLYURETHANE / ALUMINUM CORE	Up to 1,200 lbs.	-40° to +160° F	55 (±) 5 (D)
MOLDON RUBBER / CAST IRON CORE	Up to 500 lbs.	-40° to +160° F	75 (±) 5 (A)
MOLDON POLYURETHANE / CAST IRON CORE	Up to 1,500 lbs.	-30° to +180° F	55 (±) 5 (D)
PHENOLIC	Up to 1,400 lbs.	-45° to +250° F	90(±) 5 (D)
CAST IRON	Up to 1,500 lbs.	-45° to +250° F	-----
DUCTILE	Up to 3,800 lbs.	-45° to +250° F	-----
V-GROOVE	Up to 1,000 lbs.	-45° to +250° F	-----



Floor Surfaces

Wheel Type	Carpet	Brick	Concrete	Linoleum	Asphalt	Terrazzo	Wood	Smooth Steel	Ribbed Steel	Tile
CUSHION / SOLID RUBBER	✓	✓	✓	✓	✓	✓	✓	✓	✓	✓
HARD / SOLID RUBBER	✓	✓	✓	✓	✓	✓	✓	✓	✓	✓
WELDED DISC / RUBBER	✓	✓	✓	✓	✓	✓	✓	✓	✓	✓
WELDED DISC / POLYURETHANE	✓	✓	✓	✓	✓	✓	✓	✓	✓	✓
ADVANTAGE TPR (INCLUDING HEAT / HEALTH)	✓	✓	✓	✓	✓	✓	✓	✓	✓	✓
HIGH MODULUS RUBBER	✓	✓	✓	✓	✓	✓	✓	✓	✓	✓
FULL PNEUMATIC RUBBER	✓	✓	✓	✓	✓	✓	✓	✓	✓	✓
POLYOLEFIN / TRITON	✓	✓	✓	✓	✓	✓	✓	✓	✓	✓
HI-TEMP RESIN	✓	✓	✓	✓	✓	✓	✓	✓	✓	✓
POLYLOC AND MAGNUM POLYURETHANE	✓	✓	✓	✓	✓	✓	✓	✓	✓	✓
SOLID ELASTOMER	✓	✓	✓	✓	✓	✓	✓	✓	✓	✓
MOLDON RUBBER / ALUMINUM CORE	✓	✓	✓	✓	✓	✓	✓	✓	✓	✓
MOLDON POLYURETHANE / ALUMINUM CORE	✓	✓	✓	✓	✓	✓	✓	✓	✓	✓
MOLDON RUBBER / CAST IRON CORE	✓	✓	✓	✓	✓	✓	✓	✓	✓	✓
MOLDON POLYURETHANE / CAST IRON CORE	✓	✓	✓	✓	✓	✓	✓	✓	✓	✓
CAST IRON / DUCTILE	✓	✓	✓	✓	✓	✓	✓	✓	✓	✓
V-GROOVE	✓	✓	✓	✓	✓	✓	✓	✓	✓	✓

Operating Conditions

Wheel Type	Water	Steam	Mild Chemicals	Oil/Grease	Metal Chips	High Heat > +250°F	Extreme Cold -20°F	Animal Fats	Noise Reduction	Floor Protection	Shock Absorption
CUSHION / SOLID RUBBER	✓	✓	✓	✓	✓	✓	✓	✓	✓	✓	✓
HARD / SOLID RUBBER	✓	✓	✓	✓	✓	✓	✓	✓	✓	✓	✓
WELDED DISC / RUBBER	✓	✓	✓	✓	✓	✓	✓	✓	✓	✓	✓
WELDED DISC / POLYURETHANE	✓	✓	✓	✓	✓	✓	✓	✓	✓	✓	✓
ADVANTAGE TPR (INCLUDING HEAT / HEALTH)	✓	✓	✓	✓	✓	✓	✓	✓	✓	✓	✓
HIGH MODULUS RUBBER	✓	✓	✓	✓	✓	✓	✓	✓	✓	✓	✓
FULL PNEUMATIC RUBBER	✓	✓	✓	✓	✓	✓	✓	✓	✓	✓	✓
POLYOLEFIN / TRITON	✓	✓	✓	✓	✓	✓	✓	✓	✓	✓	✓
HI-TEMP RESIN	✓	✓	✓	✓	✓	✓	✓	✓	✓	✓	✓
POLYLOC AND MAGNUM POLYURETHANE	✓	✓	✓	✓	✓	✓	✓	✓	✓	✓	✓
SOLID ELASTOMER	✓	✓	✓	✓	✓	✓	✓	✓	✓	✓	✓
MOLDON RUBBER / ALUMINUM CORE	✓	✓	✓	✓	✓	✓	✓	✓	✓	✓	✓
MOLDON POLYURETHANE / ALUMINUM CORE	✓	✓	✓	✓	✓	✓	✓	✓	✓	✓	✓
MOLDON RUBBER / CAST IRON CORE	✓	✓	✓	✓	✓	✓	✓	✓	✓	✓	✓
MOLDON POLYURETHANE / CAST IRON CORE	✓	✓	✓	✓	✓	✓	✓	✓	✓	✓	✓
PHENOLIC	✓	✓	✓	✓	✓	✓	✓	✓	✓	✓	✓
CAST IRON / DUCTILE	✓	✓	✓	✓	✓	✓	✓	✓	✓	✓	✓
V-GROOVE	✓	✓	✓	✓	✓	✓	✓	✓	✓	✓	✓

# Healthcare



Twin-Med



Grey Tech



Dual Wheel



NeoTeq Dual



NeoTeq



Stainless Steel



Shepherd Friction Ring



Next Generation



Colson 2 Series Performa



Colson 4 Series



## *Quiet Initiative*

CLEAN | QUIET | SMOOTH

# Institutional and Commercial

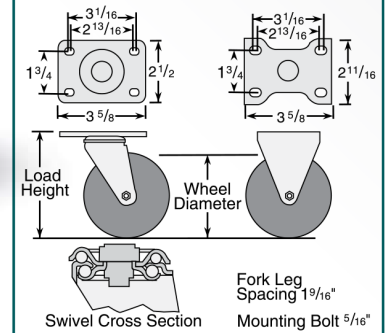
- Top Plate Swivel & Rigid
- Capacity up to 325 lbs each

## Standard Features

- Zinc plated finish is attractive and durable
- Full double ball hardened raceways for better performance and greater durability
- $\frac{3}{8}$ " hollow axle with lock nut
- Grease holes on wheel bearing for greater convenience
- Multi-temp grease lubricates in extreme hot and cold temperatures

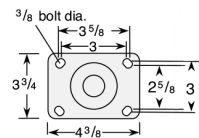


## Standard Dimensions

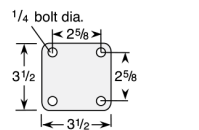


## Optional Top Plates

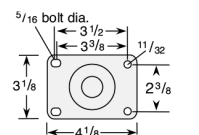
### # 27 Top Plate (Swivel)



### # 35 Top Plate (Swivel)



### # 59 Top Plate (Swivel)



## Caster Brake



**Top Lock**  
Available on all swivel models with solid axle only. Field installable.



**Total Lock**  
Locks wheel and swivel simultaneously. Fits 3 1/2", 4" and 5" swivel models. Field installable.



**Directional Lock**  
Available with standard top plate only. For optional top plates, consult factory.  
**Note: No Dust Cap Available.**

## Wheel Option

**Thread Guards**  
Specify metal or plastic.

## Wheel Selection

Perma Flat Tread



Perma Round Tread



Perma Conductive Flat



Perma Conductive Round



Polyolefin



Thermo



ThermoTech



Polyurethane HI-TECH



Cast Iron



Rubber HI-TECH



Phenolic



## Fork Option



**NSF Listed**  
All models except thread guards and cast iron wheels.

### Swivel Dust Cap

### Axle/Nut Options

Zerk Axle (not available with top lock brake)  
Solid Axle  
Thick Lock Nut

# Industrial

- Top Plate Swivel & Rigid
- Capacity up to 1250 lbs each

## Standard Features

- Attractive zinc plated finish
- Full double ball hardened raceways
- 1/2" hollow axle with grease zerk and lock nut
- Plastic seal/retainer washer (roller bearing models)
- 1/4" steel top plate for durability
- Permanent rivet king pin with 5/8" diameter rivet
- Grease fittings: wheel bearing and swivel raceway
- Multi-temp grease lubricates in extreme hot and cold temperatures



## Fork / Wheel Options



### NSF Listed

All models except swivel lock, thread guards, forged steel and cast iron core wheels.



### Foot Activated Swivel Lock

Available on all swivel casters with standard top plate.



### Hand Activated Swivel Lock

Available on all swivel casters in Bolt-On or Welded design.

### DirtBan Swivel Seal

Not available on swivel lock models.

### Thread Guards

Specify metal or plastic

### Load Height Option

6" dia. models with 7 1/4" load height. Only Side Lock brakes

### Axle/Nut Options

Solid Axle  
Thick lock nut

### Lube Options

No Grease
Double Grease
300° Continuous
500° Continuous

## Caster Brake



### Tread Lock

Available on all swivel casters except 3 1/4" diameter and V-Groove models.



### Tech Lock®

Available on all swivel casters except 3 1/4" diameter, V-Groove and Swivel Lock models. 6" rigid model available.



### Side Lock

Available on all swivel roller bearing or one piece Delrin models except 3 1/4" diameter.



### Total Lock

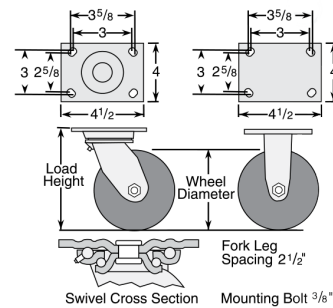
Available on 4", 5", 6" & 8" swivel models except 3 1/4" diameter and V-Groove wheels.



### Top Lock

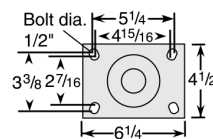
Available on 4", 5", 6" and 8" swivel models except V-Groove.

## Standard Dimensions

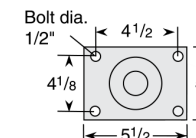


## Optional Top Plates

### #2 Top Plate



### #4 Top Plate



## Wheel Selection



# Heavy Duty Industrial



**62 Series**  
Capacity to 1500 lbs

Manufactured from cold formed steel, this popular series is recommended for heavy duty applications. A heat treated king bolt and nut ensure longer caster life.



**71 Series**  
Capacity to 1500 lbs

Heavy duty forged steel for extended life in rugged applications.



**81 Series**  
Capacity to 2000 lbs

The 81 series is drop forged and recommended for the heaviest manually moved loads or for medium duty power drawn equipment.



**90 Series**  
Capacity to 3500 lbs

Our 90 series is made from ASI 1045 drop forged steel and is highly recommended for rugged applications.



Cast Iron



Elastomer



Forged Steel



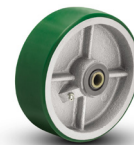
Phenolic



Poly on Poly



Polyurethane on Aluminum



Polyurethane on Cast Iron



Rubber on Iron



Rubber on Poly



# Platform Trucks, Tilt Trucks, Rubbermaid



Nutting Wood Platform Truck



Akro-Mils Work-Height Platform Truck



B&P Diamond Plate Steel Platform Truck



Rubbermaid Tandem Dolly for BRUTE



Rubbermaid BRUTE Round Containers

10 gal, 20 gal, 32 gal, 44 gal, or 55 gal  
(Lids Available)  
Shown with Trainable Dolly



Rubbermaid Tilt Truck  
Available in 1/2 Cubic Yard  
and 1 Cubic yard

Hand trucks



3-Way Bottled Water Truck



Disc Brake Truck

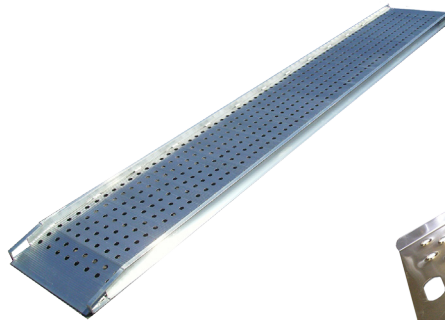
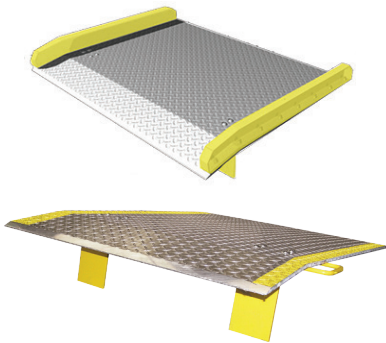


General Purpose Hand Truck



2-Way Convertible Truck

Dock Boards, Plates, Ramps, and Curb Ramps



Standard Loop Handle Curved Back



Standard Loop Handle Flat Back



Standard Twin Handle Flat Back



Standard Twin Handle Curved Back

# Hand Truck Parts

## Frames



Standard Straight Back



Lattice Back with 1 Strap



Lattice Back with 2 Straps

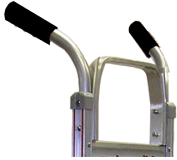


Curved Back All Aluminum Beer/Beverage



Curved Back All Aluminum with Keg Hook

## Handles



Standard Double Grip



Standard Loop with U-Brace



Single Pin



Double Loop



Straight Loop Vertical Grip

## Wheels



10" 4 Ply Pneumatic  
2 pc. Steel Hub  
Precision Bearings



8" Pneumatic Wheel  
2.8" Tread Width



Slick Tire 10"  
Pneumatic



Carefree 10"  
No Flat - Solid  
Foam



Semi-Pneumatic  
8" or 10" - 1 pc.  
Plastic Hub

## Noseplates



Front Mount Extruded Aluminum



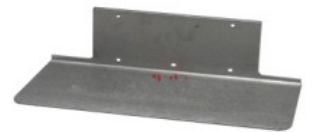
Recessed Heel with Cutouts



Cast, Recessed heel with Cutouts



Front Mount Extruded Aluminum



Rear Mount Extruded Aluminum

## Accessories



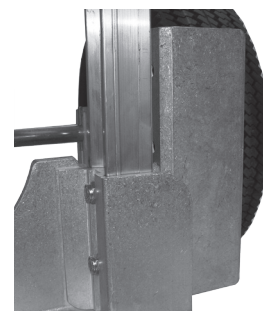
Cast Aluminum Stair Climber



Stair Climber



Spring Loaded Extractor Bar



Wheel Guard



Accessory Bag



Three Sided Cart



Security Cart



Retail Display Unit



Metro Super Erecta®



Metro Super Adjustable Super Erecta®



MetroMax iQ®



MetroMax i qwikTRAK



Super Erecta® Top-Track®



### SUPERMARKET SOLUTIONS

HEALTHCARE

COMMERCIAL

FOODSERVICE

CONSUMER

## MetroMax i®

“The ultimate storage and handling system with a lifetime guarantee against rust”



## MetroMax Q®

“Quick to Clean  
Quick to Adjust  
Quick to Assemble”



## Super Adjustable Super Erecta®

“The easiest to adjust wire shelving system ever”



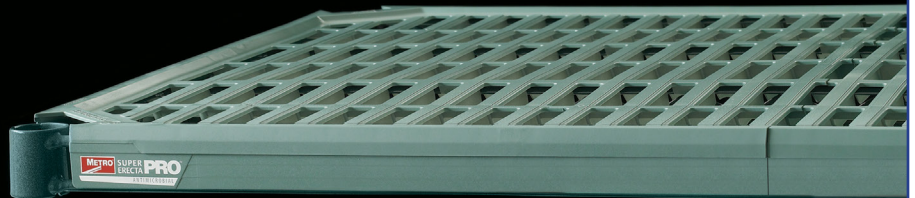
## qwikSLOT™

“Add-A-Shelf,  
Remove-A-Shelf...  
Instantly”



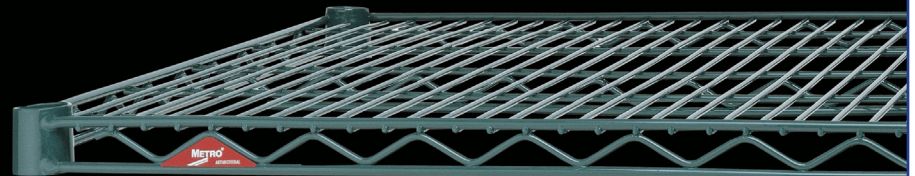
## Super Erecta Pro®

“Durable and Cleanable.  
The original — reinnovated.”



## Super Erecta®

“The Original Wire Storage and Handling System”



## Drop Mat™

“Provides density and containment economically”



## Super Erecta® Solid

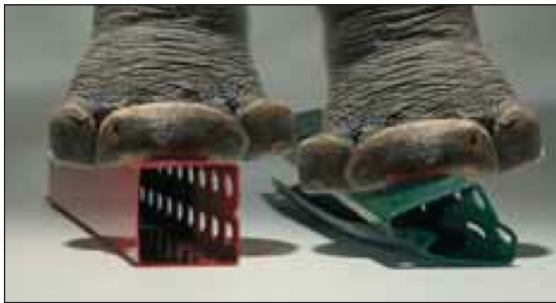
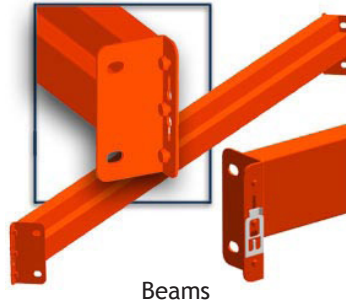
“A solid performer in the proven Super Erecta style”



**SK2000**  
CLOSED TUBULAR RACK

All racks are not the same. Construction, materials, and engineering differences can really add up, even when they're not easily seen. Steel King developed the SK2000® pallet rack to be superior in every way.

When Steel King introduced the SK2000® all-tubular design, it instantly became an industry standard. All materials being equal, tubular racks will always be stronger than open-backed racks. Combined with Steel King's other innovative engineering and safety features, the closed-tube SK2000® is the clear choice. Closed tube construction may be the most obvious advantage in SK2000®, but it's not the only one.



*Features*

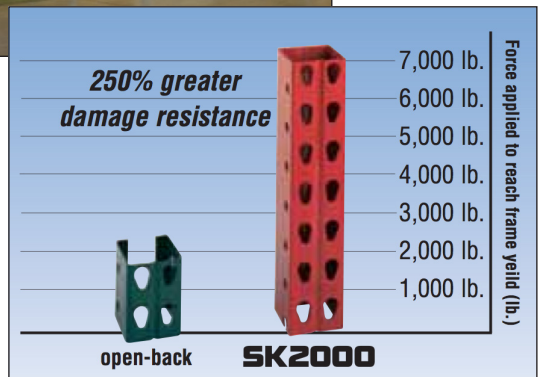
- Closed-tubular upright
- Decimal thickness specified
- 1" x 2" horizontal tubular bracing
- Standard Heavy Horizontal bracing
- Two full 2" welds
- Multiple offset anchor holes
- Heavy duty with nesting ridge
- Flush to column base
- Seamlessly welded tubular beam
- Full vertical fillet welds
- High strength steel
- Tear drop and rivet
- Standard 3-rivet connection, with optional 4-rivet connection available
- Heavy-duty connection plate
- Exclusive, auto-engaging safety clip
- Powder coat



Poppy Orange



Precaution Blue



# Rivet Rack RiveTier® Boltless Shelving



**Heavy-gauge posts** are available in standard-duty and heavy-duty for high capacity storage.

**Solid steel beams** in 4 styles mean there's a RiveTier product to fit your needs - from general storage to the heaviest of industrial applications.

**Decking choices** include particle board, wire grating, melamine, and metal shelving to meet all of your storage needs.

**Optional accessories** include hang bars, aisle ties, tire cleats and more, so your RiveTier system can grow as your storage needs change.



Everything you need is shipped in a compact bundle for easy assembly



Just tap RiveTier together with a rubber mallet - that's all it takes! No nuts, bolts, or other fasteners are required.



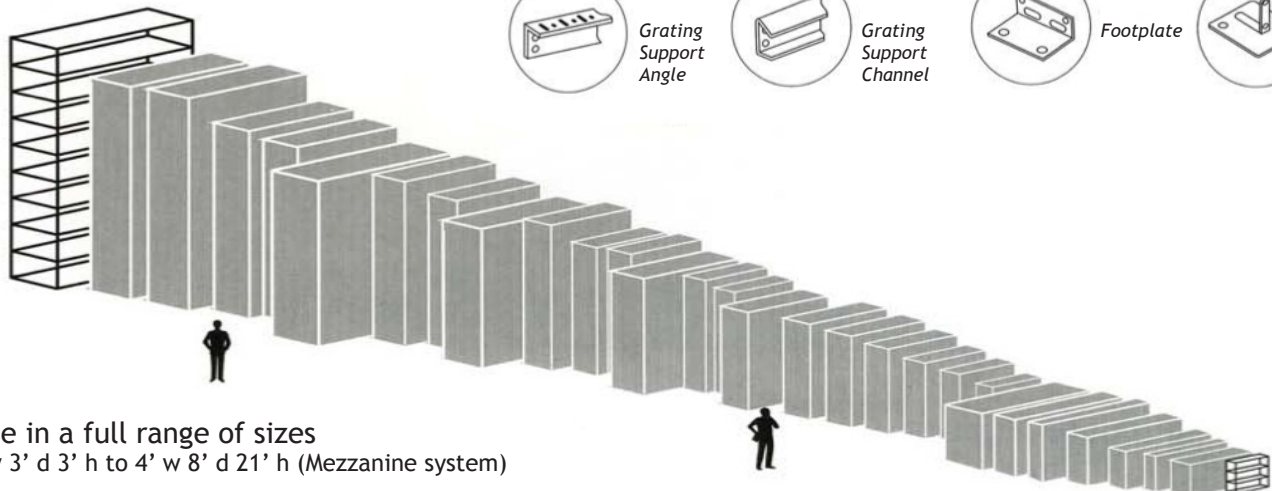
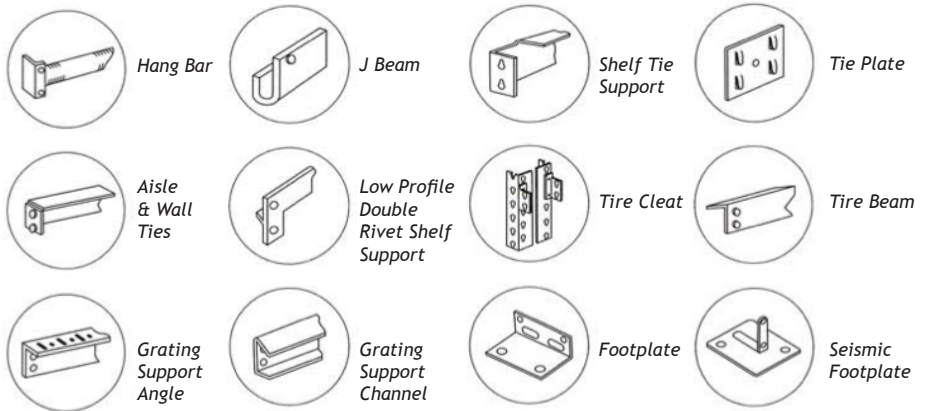
In just minutes, RiveTier Boltless Shelving is ready to work!

## Color



Standard color: grey  
 Also available: blue, red, green, beige, black  
 Other colors, including PMS color matches, available upon special order

## Accessories



Available in a full range of sizes from 1' w 3' d 3' h to 4' w 8' d 21' h (Mezzanine system)



Shelving, storage, workstations



CNC Tool Storage



Spider Shelving System



Workstation System



Modular Drawer System



Lockers, plastic lockers, shelving, storage, bulk storage



Metal Lockers



Plastic Lockers



Bulk Storage





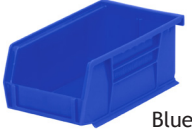
Bins, storage



Berry



Black



Blue



Clear



Green



Light Blue



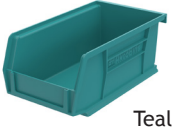
Purple



Red



Stone



Teal



Yellow



White



AkroBins



Shelf Bins



ShelfMax



Indicator Bins



InSight Ultra Clear Bins



ESD Containers



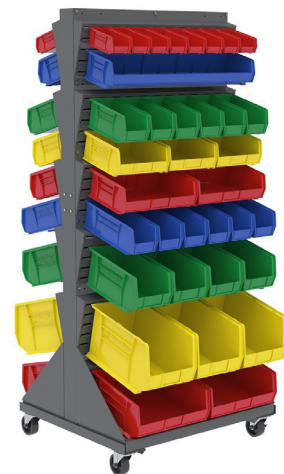
Earth Saver Bins



Attached Lid Containers



Work Height Platform Trucks



Louvered Lean Panel Floor Rack with Dolly

# Moving Equipment



## Moving Dollies

18x30 available with carpet, rubber, and non-skid H  
500-1000lb capacity



## Appliance Dolly

500-1750lbs capacity  
Many sizes available  
Various options



## Panel Movers

Great for:  
Office partitions  
Tables  
Mattresses  
Bedframes



## Carpet Protection

Neoprene Rug Runners  
Carpet Mask

## Cargo Control

Straps  
Cargo Bars  
E-Track  
Bungees



## Forearm Fork Lifts

User friendly,  
adjustable straps

**Mover & Product Protection**

Furniture Pads  
Stretch Film  
Back Supports  
Door Jam Protectors



**Rubber Bands**

4 sizes available:  
Small, Medium,  
Large, X-Large



**Mattress Carriers**

EZ Sling  
Canvas Sling



**Accessories**

Stretch Film Cutter  
Stretch Film Handle  
E-Clip 3-Prong Rubberband Holder  
Packing Tape and Dispenser

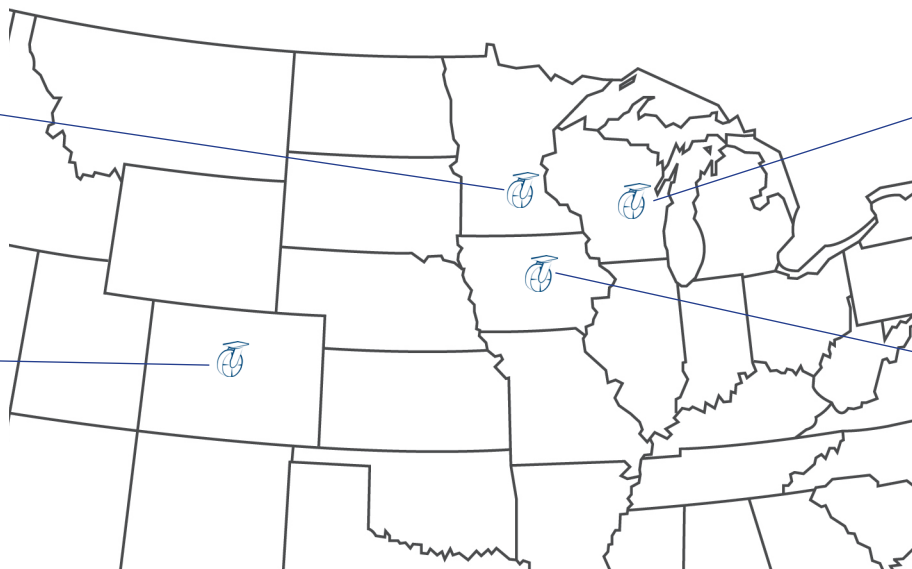




---

Garland's Inc.  
2501 26<sup>th</sup> Ave S  
Minneapolis, MN 55406  
612.333.3469  
800.809.7888  
Headquarters

Garland's Inc.  
4900 East 39<sup>th</sup> Ave  
Denver, CO 80207  
303.388.1276  
877.388.1276



The Caster Guy &  
Garland's Inc.  
1450 Radisson St  
Green Bay, WI 54302  
920.432.2928  
800.472.2118

Garland's Inc.  
1335 NE 50<sup>th</sup> Ave  
Des Moines, IA 50313  
515.244.7276  
800.728.3866

---

Over 5000 manufacturers within your reach – Call us for all your material handling needs



Bulk Bins



Pallet Jacks



Drum Cradles



Carts



Machine Movers



Rubbermaid



Tilt Trucks



1450 Radisson St | Green Bay, WI 54302  
Toll free: 800.427.2118 | Phone: 920.432.2928 | Fax: 920.432.8065  
[www.thecasterguy.com](http://www.thecasterguy.com)