



About Us

The Caster Guy is located in beautiful Green Bay Wisconsin. Our company has been in business since 1984 and The Caster Guy website began in 2009. We distribute casters, wheels, and related accessories all over the United States to homeowners as well as all business types. We sell via the web, phone, and to walk in customers.

The Caster Guy was created to ensure that potential customers from coast to coast are able to reap the same benefits that our local customers have enjoyed for years.

Our mission is to provide you with the best possible experience for your caster, wheel, or related accessory needs. This includes fast friendly service and competitive pricing.

As of July 1st, 2013 The Caster Guy became a division of Garland's Inc., and thus now has access to a full line of material handling products.

Established in Minneapolis, MN, 1944, Garland's has been distributing casters, wheels, shelving, and a wide variety of other material handling products for seventy years. Our strength of service and dedication has allowed our continued growth through the economic hardships of the eighties, and the more recent recession of the 2000's. Our stability has allowed us to expand into markets in Iowa, Colorado, and Wisconsin; giving us the ability to provide greater service to the Midwest. As one of the top caster distributors in the nation, Garland's Inc.

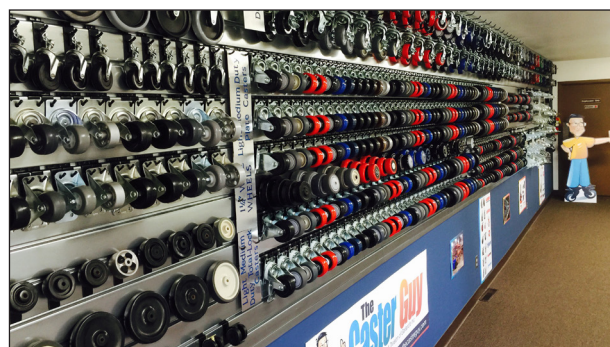
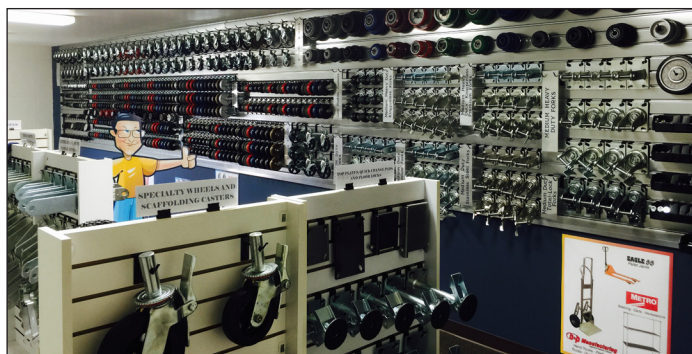
brings the needs of our customers directly to the caster industry's forefront. Being a long standing member of the National Caster Alliance, Garland's Inc. has cultivated close relationships with some of the most prestigious manufacturers in the caster industry. In addition to the thousands of other manufacturers we offer, we proudly represent the entire line of Colson products: Colson, Albion, Shepherd, Med-Caster, Jarvis, Faultless, and Pemco.

Our commitment to customer service ensures Garland's is the team member for your business, and its fast paced changing landscape. All our locations have state of the art shipping and receiving departments offering same day shipping, and blind shipments; guaranteeing your customers will always be your customers.

Providing high quality products gives you the dependability and durable performance that you require, and deserve.

Garland's outside sales force provides efficient, concise, professional on-site assistance to meet your needs. Our sales representatives have years of hands-on experience turning unique issues into practical solutions. Your Garland's inside coordinator is just a call away. Each inside salesperson is prepared to help you with specifications, pricing and delivery information.

We are committed to providing the highest caliber of service and quality products in our industry for our customers who rely on us for their material handling needs year after year.





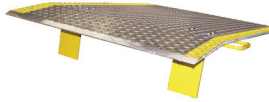
Casters & Wheels

Albion	Hamilton
Colson	Jarvis
Darcor	Medcaster
Darnell-Rose	R&K Wheels
Faultless	Shepherd



Hand & Pallet Trucks

B&P Mfg	Magline
BT Pallet Truck	Mobile
Gillis	Raymond Products
Honeyman	Valleycraft
Lakeside	



Dock Equipment

B&P Mfg	Valleycraft
Campus Crafts	Vestil
Mars Air Doors	Wesco
Save-Ty Yellow	



Shelving

Intermetro	Rivetier
Edsal	Lyon
Equipto	Pucel
Scotland Rack	Tri-Boro



Storage Racks

Steel King	Meco
Cardinal	Lyon
Edsal	Scotland Rack
Equipto	Mecalux
Jarke	



Lockers & Storage

Tennsco	Penco
Lyon	Pinnacle
ASI	Republic
Bradley	Edsal
Hallowell	



Shop Equipment

Rousseau	Lyon
Cotterman	Just Rite
Durham	Rubbermaid
EGA	Vestil
Gillis	



Bins & Totes

Akro-Mils	Orbis
Buckhorn	Quantum
Durham	Schaefer
Lewis	



Platform Trucks

Nutting
B&P Mfg
Magline
Rubbermaid



Ergonomic & Lifting

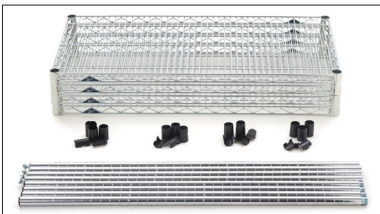
Presto	Bishamon
Advance Lift	Jesco
Atlas Lifts	Liftex, Inc.
Autoquip	Morse Mfg
Ecoa	Roll-A-Way

The above list is only a sample of all the available options and manufacturers.
For more please contact The Caster Guy Customer Service.

Super Erecta

Stationary Units

size (W x L x H), inches	part number
18 x 36 x 74 ½	EZ1836NC-4
18 x 48 x 74 ½	EZ1848NC-4
18 x 60 x 74 ½	EZ1860NC-4
24 x 36 x 74 ½	EZ2436NC-4
24 x 48 x 74 ½	EZ2448NC-4
24 x 60 x 74 ½	EZ2460NC-4



- Convenience Pak: providing a complete shelving unit in a single box, Convenience Pak shelving is the easy-to-order alternative to separate shelving components.
- Each pack includes 4 shelves with split sleeves and 4 split posts with threaded connectors and leveling feet.
- Chrome finish

Wire Mobile Units

size (W x L), inches	part number - rubber casters	part number - poly casters
18 x 36	N336BC	N336EC
18 x 48	N356BC	N356EC
18 x 60	N366BC	N366EC
21 x 36	N436BC	N436EC
21 x 48	N456BC	N456EC
21 x 60	N466BC	N466EC
24 x 36	N536BC	N536EC
24 x 48	N556BC	N556EC
24 x 60	N566BC	N566EC



- Open wire shelf design minimizes dust and increases air circulation and visibility. Casters included. Overall height 67 ⅞". Carts are configured with 63UP posts.
- Chrome finish
- Models with rubber casters have a load capacity of 600 lbs.
- Models with polyurethane casters have a load capacity of 900 lbs.

Solid Mobile Units (polyurethane casters)

size (W x L), inches	part number
24 x 36	F536EG
24 x 48	F556EG
24 x 60	F566EG

- Consists of 4 shelves, posts, split sleeves, donut bumpers, and 5" poly casters (2 swivel, 2 brake).
- Strong and versatile
- Solid shelf stem caster carts feature a ⅛" raised "ship's edge" around perimeter of shelves to help contain spillage.
- With 4 galvanized flat shelves and chrome-plated posts
- 63" Posts; overall height 67⅞"



Individual Components



Super Erecta® Wire Shelving

- Packaging: wire shelves are priced individually and packaged no more than 4 per carton except 60" and 72" lengths and 30" and 36" widths, which are packaged no more than 2 per carton.
- Plastic sleeves and wedges are included with each shelf.



Super Erecta® Solid Shelving

- Shelves are priced and sold individually
- For standard packaging, the number of shelves per box varies by size
- Galvanized solid shelving has uncoated, aluminum cast corners
- Standard stainless steel solid shelving has black powder-coated corners
- Autoclavable/Cart-Washable stainless steel shelving has stainless steel corners

size (W x L), inches	galvanized part number	stainless part number	autoclavable part number
14 x 24	1424FG	1424FS	1424NFS
14 x 30	1430FG	1430FS	1430NFS
14 x 36	1436FG	1436FS	1436NFS
14 x 42	1442FG	1442FS	1442NFS
14 x 48	1448FG	1448FS	1448NFS
14 x 60	1460FG	1460FS	1460NFS
18 x 24	1824FG	1824FS	1824NFS
18 x 30	1830FG	1830FS	1830NFS
18 x 36	1836FG	1836FS	1836NFS
18 x 42	1842FG	1842FS	1842NFS
18 x 48	1848FG	1848FS	1848NFS
18 x 60	1830FG	1830FS	1830NFS
21 x 24	2124FG	2124FS	2124NFS
21 x 30	2130FG	2130FS	2130NFS
21 x 36	2136FG	2136FS	2136NFS
21 x 42	2142FG	2142FS	2142NFS
21 x 48	2148FG	2148FS	2148NFS
21 x 60	2160FG	2160FS	2160NFS
24 x 24	2424FG	2424FS	2424NFS
24 x 30	2430FG	2430FS	2430NFS
24 x 36	2436FG	2436FS	2436NFS
24 x 42	2442FG	2442FS	2442NFS
24 x 48	2448FG	2448FS	2448NFS
24 x 60	2460FG	2460FS	2460NFS

size (W x L), inches	chrome part number	Metroseal 3 part number	stainless part number
14 x 24	1424NC	1424NK3	1424NS
14 x 30	1430NC	1430NK3	1430NS
14 x 36	1436NC	1436NK3	1436NS
14 x 42	1442NC	1442NK3	1442NS
14 x 48	1448NC	1448NK3	1448NS
14 x 60	1460NC	1460NK3	1460NS
14 x 72	1472NC	1472NK3	1472NS
18 x 18	1818NC	—	—
18 x 24	1824NC	1824NK3	1824NS
18 x 30	1830NC	1830NK3	1830NS
18 x 36	1836NC	1836NK3	1836NS
18 x 42	1842NC	1842NK3	1842NS
18 x 48	1848NC	1848NK3	1848NS
18 x 54	1854NC	1854NK3	1854NS
18 x 60	1860NC	1860NK3	1860NS
18 x 72	1872NC	1872NK3	1872NS
21 x 24	2124NC	2124NK3	2124NS
21 x 30	2130NC	2130NK3	2130NS
21 x 36	2136NC	2136NK3	2136NS
21 x 42	2142NC	2142NK3	2142NS
21 x 48	2148NC	2148NK3	2148NS
21 x 60	2160NC	2160NK3	2160NS
21 x 72	2172NC	2172NK3	2172NS
24 x 24	2424NC	2424NK3	2424NS
24 x 30	2430NC	2430NK3	2430NS
24 x 36	2436NC	2436NK3	2436NS
24 x 42	2442NC	2442NK3	2442NS
24 x 48	2448NC	2448NK3	2448NS
24 x 60	2460NC	2460NK3	2460NS
24 x 72	2472NC	2472NK3	2472NS
30 x 36	3036NC	3036NK3	3036NS
30 x 48	3048NC	3048NK3	3048NS
30 x 60	3060NC	3060NK3	3060NS
30 x 72	3072NC	3072NK3	3072NS
36 x 36	3636NC	3636NK3	3636NS
36 x 48	3648NC	3648NK3	3648NS
36 x 60	3660NC	3660NK3	3660NS
36 x 72	3672NC	3672NK3	3672NS

Security Storage

Super Erecta® Shelf Security Units

- 66-13/16" high
- Immediate shelves are not included with base models and must be ordered separately.
- Chrome finish
- Mobile units include 5" casters

Stationary Units

size (W x L), inches	fits shelf (inches)	part number
21½ x 38½	18 x 36	SEC33C
21½ x 50½	18 x 48	SEC35C
27¼ x 38½	24 x 36	SEC53C
27¼ x 50½	24 x 48	SEC55C
27¼ x 62½	24 x 60	SEC56C
33½ x 38½	30 x 36	SEC63C
33½ x 50½	30 x 48	SEC65C
33½ x 62½	30 x 60	SEC66C



Mobile Units

caster type	size (W x L), inches	fits shelf (inches)	part number
(2) 5MP/(2) 5MPB	21½ x 40¾	18 x 36	SEC33EC
(2) 5MP/(2) 5MPB	21½ x 52¾	18 x 48	SEC35EC
(4) 5MP	27¼ x 40¾	24 x 36	SEC53DC
(4) 5MP	27¼ x 52¾	24 x 48	SEC55DC
(4) 5MP	27¼ x 65	24 x 60	SEC56DC
(2) 5MP/(2) 5MPB	27¼ x 40¾	24 x 36	SEC53EC
(2) 5MP/(2) 5MPB	27¼ x 52¾	24 x 48	SEC55EC
(2) 5MP/(2) 5MPB	27¼ x 65	24 x 60	SEC56EC
(2) 5MP/(2) 5MPB	33½ x 40¾	30 x 36	SEC63EC
(2) 5MP/(2) 5MPB	33½ x 52¾	30 x 48	SEC65EC
(2) 5MP/(2) 5MPB	33½ x 65	30 x 60	SEC66EC



Heavy Duty Utility Carts

- Consist of Super Erecta wire shelves with plastic split sleeves, two one-piece handles of matching finish, and designated casters with donut bumpers
- Two- and three-tier models available
- 5" casters allow for transport of heavier loads
- 39" high
- 900lbs capacity

Chrome finish

size (W x L), inches	2-tier part number	3-tier part number
18 x 36	2SPN33DC	3SPN33DC
21 x 36	2SPN43DC	3SPN43DC
24 x 36	2SPN53DC	3SPN53DC
24 x 48	2SPN55DC	3SPN55DC
24 x 60	2SPN56DC	3SPN56DC

Type 304 Stainless finish

size (W x L), inches	2-tier part number	3-tier part number
18 x 36	2SPN33PS	3SPN33PS
21 x 36	2SPN43PS	3SPN43PS
24 x 36	2SPN53PS	3SPN53PS
24 x 48	2SPN55PS	3SPN55PS
24 x 60	2SPN56PS	3SPN56PS

Handles

- Use on corresponding width Super Erecta units to provide additional maneuverability to dolly carts or stem caster carts.
- Split sleeves included for attaching to cart.

Extended Handles

length, inches	chrome part number	stainless part number
14	EH14NC	EH14NS
18	EH18NC	EH18NS
21	EH21NC	EH21NS
24	EH24NC	EH24NS
30	EH30NC	—
36	EH36NC	—

Push Handles

length, inches	chrome part number	stainless part number
14	PH14NC	PH14NS
18	PH18NC	PH18NS
21	PH21NC	PH21NS
24	PH24NC	PH24NS
30	PH30NC	—
36	PH36NC	—



One-Piece Handles

length, inches	chrome part number	stainless part number
18	H3C	H3S
21	H4C	H4S
24	H5C	H5S

SiteSelect™ Posts

- Stationary Super Erecta® SiteSelect posts are fitted with adjustable leveling bolts to compensate for uneven surfaces.
- Mobile posts come without leveling bolt assembly to accommodate stem casters.

Stationary

height, inches	chrome part number	Metroseal 3 part number	stainless part number
7½	7P	7PK3	–
14½	13P	13PK3	13PS
27½	27P	27PK3	27PS
34½	33P	33PK3	33PS
54 ⁹ / ₁₆	54P	54PK3	54PS
62 ⁹ / ₁₆	63P	63PK3	63PS
74 ⁵ / ₈	74P	74PK3	74PS
86 ⁵ / ₈	86P	86PK3	86PS
96 ⁵ / ₈	96P	–	–

Mobile

height, inches	chrome part number	Metroseal 3 part number	stainless part number
14½	13UP	13UPK3	13UPS
27½	27UP	27UPK3	27UPS
34½	33UP	33UPK3	33UPS
54 ⁹ / ₁₆	54UP	54UPK3	54UPS
62 ⁹ / ₁₆	63UP	63UPK3	63UPS
74 ⁵ / ₈	74UP	74UPK3	74UPS
86 ⁵ / ₈	86UP	86UPK3	86UPS

Swaged

For cart wash and autoclave applications. Type 304 stainless steel.

height, inches	part number
33	33UPS-SW
54	54UPS-SW
63	63UPS-SW

Stationary Mobile Swaged



SiteSelect™ Posts are grooved at 1" increments and numbered at 2" increments. Posts are double-grooved every 8" for easy identification.

Three-Sided Snake Frames

- Provide additional support or access to floor with these sturdy square snake frames.
- Plated finish

size (W x L), inches	part number
18 x 24	SF31N3C
18 x 30	SF32N3C
18 x 36	SF33N3C
18 x 42	SF34N3C
18 x 48	SF35N3C
18 x 60	SF36N3C
18 x 72	SF37N3C
21 x 24	SF41N3C
21 x 30	SF42N3C
21 x 36	SF43N3C
21 x 42	SF44N3C

size (W x L), inches	part number
21 x 48	SF45N3C
21 x 60	SF46N3C
21 x 72	SF47N3C
24 x 24	SF51N3C
24 x 30	SF52N3C
24 x 36	SF53N3C
24 x 42	SF54N3C
24 x 48	SF55N3C
24 x 60	SF56N3C
24 x 72	SF57N3C



Casters

Stem Casters

- Use with Super Erecta posts and shelves to create a mobile shelving unit
- Stem casters are shipped with donut bumper at no additional charge



5MB



5PC



5PCR



5MPGSA



5MHTP

wheel diameter, inches	tread width, inches	load capacity	type	wheel tread	temperature rating	part number
5	1¼	200 lbs	swivel	resilient, flat	-30° to 160°F	5M
5	1¼	200 lbs	brake	resilient, flat	-30° to 160°F	5MB
5	1¼	200 lbs	rigid	resilient, flat	-30° to 160°F	5MR
5	1¼	300 lbs	swivel	polyurethane, flat	-30° to 180°F	5MP
5	1¼	300 lbs	brake	polyurethane, flat	-30° to 180°F	5MPB
5	1¼	300 lbs	rigid	polyurethane, flat	-30° to 180°F	5MPR

Polymer Casters

- Innovative polymer stem casters offer corrosion resistance and enhanced durability
- Appropriate for all medium duty applications
- Donut bumpers included
- All-polymer horn, stainless steel axle and hardware

wheel diameter, inches	tread width, inches	load capacity	type	wheel tread	temperature rating	part number
5	1¼	300 lbs	swivel	polyurethane, flat	-20° to 120°F	5PC
5	1¼	300 lbs	brake	polyurethane, flat	-20° to 120°F	5PCB
5	1¼	300 lbs	rigid	polyurethane, flat	-20° to 120°F	5PCR

Stainless Steel Cart-Washable Stem Casters

- Stem casters are shipped with donut bumper at no additional charge

wheel diameter, inches	tread width, inches	load capacity	type	wheel tread	temperature rating	part number
5	1¼	300 lbs	swivel	polyurethane, flat	-30° to 180°F	5MPGSA
5	1¼	300 lbs	brake	polyurethane, flat	-30° to 180°F	5MPBGSA
5	1¼	300 lbs	rigid	polyurethane, flat	-30° to 180°F	5MPRGSA

High-temperature Autoclave Stem Casters

wheel diameter, inches	tread width, inches	load capacity	type	wheel tread	temperature rating	part number
5	1½	300 lbs	swivel	polyurethane, flat	-45° to 475°F	5MHTP
5	1½	300 lbs	brake	polyurethane, flat	-45° to 475°F	5MHTPB
5	1½	300 lbs	swivel	polyurethane, flat	-20° to 475°F	5MHTN
5	1½	300 lbs	brake	polyurethane, flat	-20° to 475°F	5MHTNB

Mobile Carts

- Four- and five-tier models available
- Consists of Super Adjustable Super Erecta wire shelves
- 5" resilient rubber or polyurethane casters with donut bumpers
- Super Adjustable Super Erecta shelves allow for quick and easy adjustability
- Open wire shelf design minimizes dust and increases air circulation and visibility
- Strong and versatile: carts with rubber casters have a 600 lbs capacity; carts with polyurethane casters have a 900 lbs capacity
- For additional storage levels, Super Adjustable shelves may be added as desired



4-Tier Models

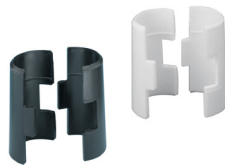
shelf size (W x L), inches	resilient rubber casters part number	polyurethane casters part number
18 x 36	A336BC	A336EC
18 x 48	A356BC	A356EC
18 x 60	A366BC	A366EC
21 x 36	A436BC	A436EC
21 x 48	A456BC	A456EC
21 x 60	A466BC	A466EC
24 x 36	A536BC	A536EC
24 x 48	A556BC	A556EC
24 x 60	A566BC	A566EC

5-Tier Models

shelf size (W x L), inches	resilient rubber casters part number	polyurethane casters part number
18 x 36	5A336BC	5A336EC
18 x 48	5A356BC	5A356EC
18 x 60	5A366BC	5A366EC
21 x 36	5A436BC	5A436EC
21 x 48	5A456BC	5A456EC
21 x 60	5A466BC	5A466EC
24 x 36	5A536BC	5A536EC
24 x 48	5A556BC	5A556EC
24 x 60	5A566BC	5A566EC

Accessories

description	part number
Replacement plastic split sleeve; black. 4 pairs per bag.	9985
Replacement plastic split sleeve; white. 4 pairs per bag.	9985W
Aluminum split sleeves with stainless rings. 4 pairs per bag.	9986S
Aluminum split sleeves with zinc rings. 4 pairs per bag.	9986Z
Glide – smooth polymer cover fits over leveling bolt to protect floors	9991P
Donut bumper; 3½" diameter	9992DB
Post Clamps. Zinc plated.	9994Z
Decorative leveling foot	HDFC
Rods and tabs – 52" long	R52C
Rods and tabs – 61" long	R61C
Rods and tabs – 72" long	R72C
Rods and tabs – 84" long	R84C
Replacement Super Adjustable kit: package includes 4 wedges, 4 sleeves, and 4 corner releases	SAKITA2



Plastic Split Sleeves



Aluminum Split Sleeve



Glide



Donut Bumper



Post Clamp



Decorative Leveling Foot



Rod and Tab



Replacement Kit

Super Adjustable

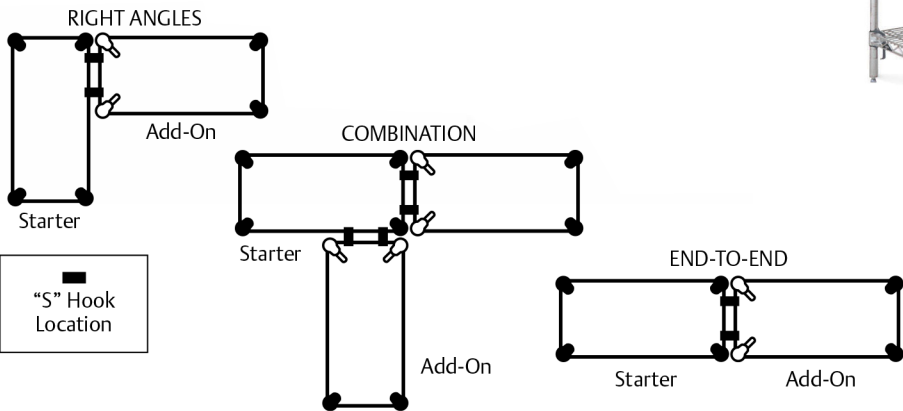
- Save time and money by eliminating adjacent posts and replacing with “S” hooks
- Starter units consist of four posts and five Super Adjustable Super Erecta shelves
- Add-On units consist of two posts, five shelves, and two “S” hooks per shelf, for attaching shelf to adjacent unit
- Posts are 74” high (74P)
- Chrome plated



“S” hook
Replacement part: **9995Z**
Two are required for each storage level.



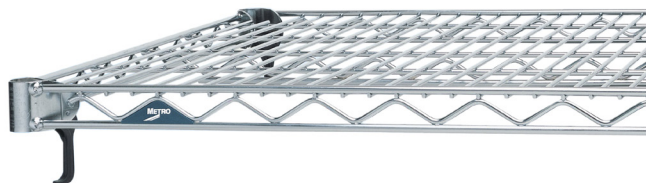
Lift the release at each corner to adjust Super Adjustable shelves at 1” increments in seconds.



Super Adjustable Wire Shelving

size (W x L), inches	chrome part number	Metroseal 3 part number	stainless part number
14 x 24	A1424NC	A1424NK3	A1424NS
14 x 30	A1430NC	A1430NK3	A1430NS
14 x 36	A1436NC	A1436NK3	A1436NS
14 x 42	A1442NC	A1442NK3	A1442NS
14 x 48	A1448NC	A1448NK3	A1448NS
14 x 60	A1460NC	A1460NK3	A1460NS
14 x 72	A1472NC	A1472NK3	A1472NS
18 x 24	A1824NC	A1824NK3	A1824NS
18 x 30	A1830NC	A1830NK3	A1830NS
18 x 36	A1836NC	A1836NK3	A1836NS
18 x 42	A1842NC	A1842NK3	A1842NS
18 x 48	A1848NC	A1848NK3	A1848NS
18 x 54	A1854NC	A1854NK3	A1854NS
18 x 60	A1860NC	A1860NK3	A1860NS
18 x 72	A1872NC	A1872NK3	A1872NS
21 x 24	A2124NC	A2124NK3	A2124NS
21 x 30	A2130NC	A2130NK3	A2130NS
21 x 36	A2136NC	A2136NK3	A2136NS
21 x 42	A2142NC	A2142NK3	A2142NS
21 x 48	A2148NC	A2148NK3	A2148NS
21 x 60	A2160NC	A2160NK3	A2160NS
21 x 72	A2172NC	A2172NK3	A2172NS
24 x 24	A2424NC	A2424NK3	A2424NS
24 x 30	A2430NC	A2430NK3	A2430NS
24 x 36	A2436NC	A2436NK3	A2436NS
24 x 42	A2442NC	A2442NK3	A2442NS
24 x 48	A2448NC	A2448NK3	A2448NS
24 x 60	A2460NC	A2460NK3	A2460NS
24 x 72	A2472NC	A2472NK3	A2472NS
30 x 36	A3036NC	–	A3036NS
30 x 48	A3048NC	–	A3048NS
30 x 60	A3060NC	–	A3060NS
30 x 72	A3072NC	–	A3072NS
36 x 36	A3636NC	–	A3636NS
36 x 48	A3648NC	–	A3648NS
36 x 60	A3660NC	–	A3660NS
36 x 72	A3672NC	–	A3672NS

- Packaging: wire shelves are priced individually and packaged no more than 4 per carton except 60" and 72" lengths and 30" and 36" widths, which are packaged no more than 2 per carton.
- Plastic sleeves and wedges are included with each shelf.



MetroMax iQ®

MetroMax iQ® Polymer Shelving

· Part number includes shelf with removable mats and one bag of wedges

Standard Shelving

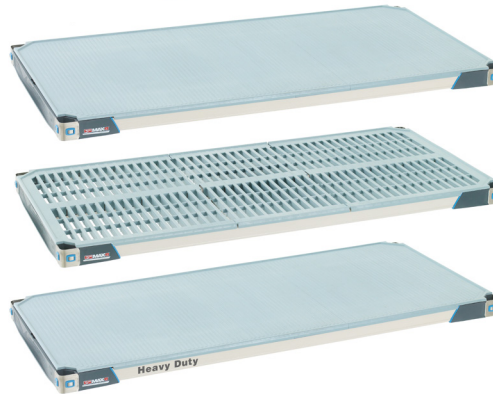
nominal shelf size (W x L), inches	shelf with grid mat part number	shelf with solid mat part number
18 x 24	MX1824G	MX1824F
18 x 30	MX1830G	MX1830F
18 x 36	MX1836G	MX1836F
18 x 42	MX1842G	MX1824F
18 x 48	MX1848G	MX1848F
18 x 54	MX1854G	MX1854F
18 x 60	MX1860G	MX1860F
18 x 72	MX1872G	MX1872F
24 x 24	MX2124G	MX2424F
24 x 30	MX2430G	MX2430F
24 x 36	MX2436G	MX2436F
24 x 42	MX2442G	MX2442F
24 x 48	MX2448G	MX2448F
24 x 54	MX2454G	MX2454F
24 x 60	MX2460G	MX2460F
24 x 72	MX2472G	MX2472F

Actual Dimensions: Width: add ¼" to nominal size. Length: subtract ¼" from nominal size.

Heavy-Duty Dunnage Shelves

· Weight capacity per shelf evenly distributed: 1,200lbs on shelves up to and including 48" long; 900 lbs for shelves 60" long

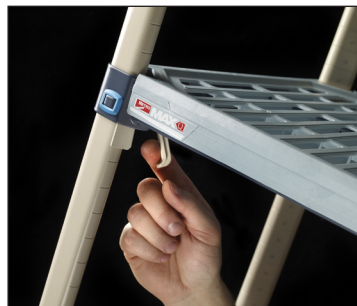
nominal shelf size (W x L), inches	shelf with grid mat part number	shelf with solid mat part number
18 x 36	MHP1836G	MHP1836F
18 x 48	MHP1848G	MHP1848F
18 x 60	MHP1860G	MHP1860F
24 x 36	MHP2436G	MHP2436F
24 x 48	MHP2448G	MHP2448F
24 x 60	MHP2460G	MHP2460F



MetroMax Q® Polymer Shelving

· Part number includes shelf with removable mats and one bag of wedges

nominal shelf size (W x L), inches	part number
18 x 24	MQ1824G
18 x 30	MQ1830G
18 x 36	MQ1836G
18 x 42	MQ1842G
18 x 48	MQ1848G
18 x 54	MQ1854G
18 x 60	MQ1860G
18 x 72	MQ1872G
21 x 24	MQ2124G
21 x 30	MQ2130G
21 x 36	MQ2136G
21 x 42	MQ2142G
21 x 48	MQ2148G
21 x 54	MQ2154G
21 x 60	MQ2160G
21 x 72	MQ2172G
24 x 24	MQ2124G
24 x 30	MQ2430G
24 x 36	MQ2436G
24 x 42	MQ2442G
24 x 48	MQ2448G
24 x 54	MQ2454G
24 x 60	MQ2460G
24 x 72	MQ2472G



Actual Dimensions: Width: add ¾" to nominal size. Length: subtract 3/16" from nominal size.

Posts

MetroMax iQ® Polymer Posts

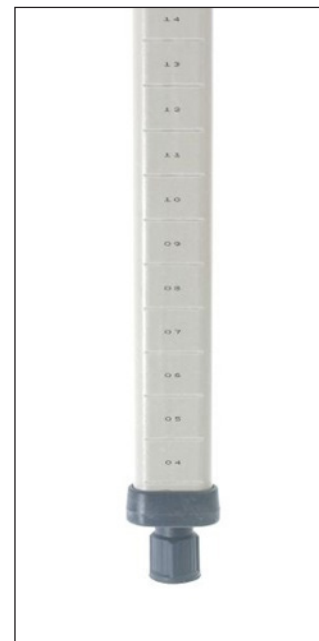
- Corrosion proof with built-in Microban antimicrobial product protection
- Compatible to use with MetroMax iQ® and Metro Max Q shelves
- Stationary posts include an adjustable leveling foot to compensate for uneven surfaces. Leveling foot can be adjusted 1".

nominal height, inches	stationary part number	mobile part number
9	–	MX9UP
13	MX13P	MX13UP
27	MX27P	MX27UP
33	MX33P	MX33UP
54	MX54P	MX54UP
63	MX63P	MX63UP
74	MX74P	MX74UP
86	MX86P	MX86UP

MetroMax iQ® Steel Posts

- Epoxy coated steel and polymer posts have Microban antimicrobial product protection
- Stationary posts include an adjustable leveling foot to compensate for uneven floors. Leveling foot can be adjusted 1".

nominal height, inches	stationary part number	mobile part number
13	MQ13PE	MQ13UPE
27	MQ27PE	MQ27UPE
33	MQ33PE	MQ33UPE
54	MQ54PE	MQ54UPE
63	MQ63PE	MQ63UPE
70	–	MQ70UPE
74	MQ74PE	MQ74UPE
86	MQ86PE	MQ86UPE



Utility Carts

MetroMax iQ® Utility Carts

- Corrosion proof shelves, posts, and Type 304 stainless steel handle
- Corrosion resistant 5PCX casters with 5" polyurethane wheels, polymer horns, and stainless steel axles
- 39¼" tall; weight capacity: 900 lbs

nominal W x L, inches	number of shelves	part number
18 x 30	2	MXUC1830G-25
24 x 36	2	MXUC2436G-25
18 x 30	3	MXUC1830G-35
18 x 36	3	MXUC2436G-35



MetroMax Q® Utility Carts

- Quick adjust corrosion resistant shelves and posts
- Corrosion proof Type 304 stainless steel handle
- Includes four 5MPX casters with 5" polyurethane wheels
- 39¼" tall; weight capacity: 900 lbs

nominal W x L, inches	number of shelves	part number
18 x 30	2	MQUC1830G-25
24 x 36	2	MQUC2436G-25
18 x 30	3	MQUC1830G-35
18 x 36	3	MQUC2436G-35



Stem Caster Carts

MetroMax i® Carts

- Corrosion proof shelves and posts; removable polymer mats
- Standard unit consists of four shelves, MX63UP 63" posts, wedge connectors, and choice of resilient rubber or polyurethane casters
- Approximate cart height: 67⁵/₁₆"
- Weight capacity: 900 lbs



i Cart with Open Grid Shelves



i Cart with Solid Shelves

Solid Shelves

nominal W x L, inches	polyurethane casters part number
18 x 36	X336EFX3
18 x 48	X356EFX3
18 x 60	X366EFX3
24 x 36	X536EFX3
24 x 48	X556EFX3
24 x 60	X566EFX3

Open Grid Shelves

nominal W x L, inches	resilient rubber casters part number	polyurethane casters part number
18 x 36	X336BGX3	X336EGX3
18 x 48	X356BGX3	X356EGX3
18 x 60	X366BGX3	X366EGX3
24 x 36	X536BGX3	X536EGX3
24 x 48	X556BGX3	X556EGX3
24 x 60	X566BGX3	X566EGX3

Stem Caster Carts with Solid Bottom i® Shelves

- 5-tier models with Microban antimicrobial product protection
- Standard unit consists of 5 shelves (4 open grid, 1 solid), 74" posts, wedge connectors, and polyurethane casters
- Approximate cart height: 79⁵/₁₆"
- Weight capacity: 900 lbs

nominal W x L, inches	i part number	Q part number
18 x 36	5X337EGX3	5Q337EG3
18 x 48	5X357EGX3	5Q357EG3
18 x 60	5X367EGX3	5Q367EG3
24 x 36	5X537EGX3	5Q537EG3
24 x 48	5X557EGX3	5Q557EG3
24 x 60	5X567EGX3	5Q567EG3



Q Cart with Solid Bottom



Q Cart with Open Grid Shelves

MetroMax Q® Carts

- Quick adjust shelves with removable polymer shelf mats
- Standard units consist of four open grid shelves, MQ63UPE 63" posts, wedge connectors, and choice of resilient or polyurethane casters
- Approximate cart height: 67⁵/₁₆"
- Weight capacity: 900 lbs

Open Grid Shelves

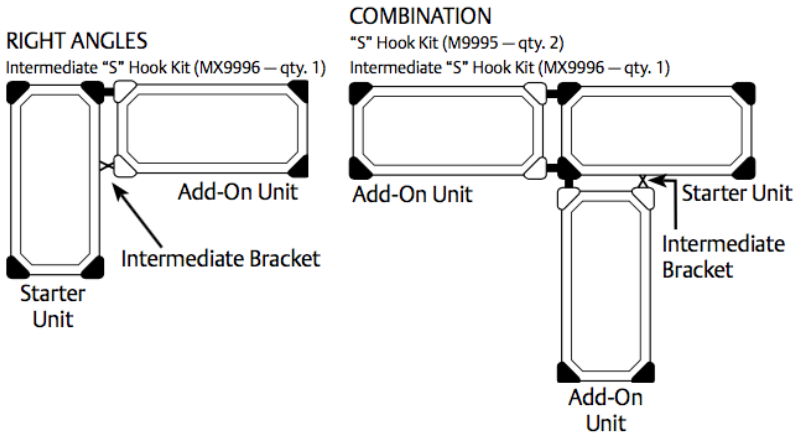
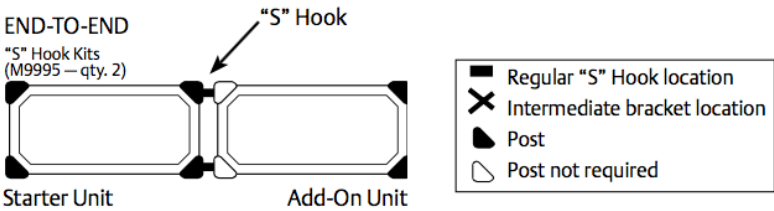
nominal W x L, inches	resilient rubber casters part number	polyurethane casters part number
18 x 36	Q336BG3	Q336EG3
18 x 48	Q356BG3	Q356EG3
18 x 60	Q366BG3	Q366EG3
21 x 36	Q436BG3	Q436EG3
21 x 48	Q456BG3	Q456EG3
21 x 60	Q466BG3	Q466EG3
24 x 36	Q536BG3	Q536EG3
24 x 48	Q556BG3	Q556EG3
24 x 60	Q566BG3	Q566EG3

MetroMax iQ[®] Shelving Units

- Save time and money by eliminating adjacent posts and replacing with “S” hooks
- Starter units consist of four posts and five shelves
- Add-On units consist of two posts, five shelves, and two “S” hooks per shelf, for attaching to adjacent unit.
- Posts are 74” high

MetroMax i Starter and Add-On Units

length, inches	18” wide starter	18” wide add-on	24” wide starter	24” wide add-on
24	5X317GX3	5AX317GX3	5X517GX3	5AX517GX3
30	5X327GX3	5AX327GX3	5X527GX3	5AX527GX3
36	5X337GX3	5AX337GX3	5X537GX3	5AX537GX3
42	5X347GX3	5AX347GX3	5X547GX3	5AX547GX3
48	5X357GX3	5AX357GX3	5X557GX3	5AX557GX3
60	5X367GX3	5AX367GX3	5X567GX3	5AX567GX3
72	5X377GX3	5AX377GX3	5X577GX3	5AX577GX3



MetroMax Q Starter and Add-On Units

length, inches	18” wide starter	18” wide add-on	21” wide starter	21” wide add-on	24” wide starter	24” wide add-on
24	5Q317G3	5AQ317G3	5Q417G3	5AQ417G3	5Q517G3	5AQ517G3
30	5Q327G3	5AQ327G3	5Q427G3	5AQ427G3	5Q527G3	5AQ527G3
36	5Q337G3	5AQ337G3	5Q437G3	5AQ437G3	5Q537G3	5AQ537G3
42	5Q347G3	5AQ347G3	5Q447G3	5AQ447G3	5Q547G3	5AQ547G3
48	5Q357G3	5AQ357G3	5Q457G3	5AQ457G3	5Q557G3	5AQ557G3
60	5Q367G3	5AQ367G3	5Q467G3	5AQ467G3	5Q567G3	5AQ567G3
72	5Q377G3	5AQ377G3	5Q477G3	5AQ477G3	5Q577G3	5AQ577G3

MetroMax iQ® Accessories



Solid Mat Overlays

- Overlays snap onto the open grid mats to create a solid surface
- Available for 21" deep MetroMax Q shelves

fits shelf, inches	part number
21 x 24	Q2124SM
21 x 30	Q2130SM
21 x 36	Q2136SM
21 x 42	Q2142SM
21 x 48	Q2148SM
21 x 54	Q2154SM
21 x 60	Q2160SM
21 x 72	Q2172SM



Handles

- Use handles on mobile units to improve maneuverability and ergonomics
- Handles are compatible with i and Q units
- Corrosion proof Type 304 stainless steel construction offers long lasting performance

Swing-up Handle

fits shelf, inches	extension depth, inches	part number
24	17¾	MSUH24S

Easy Grip Handles

fits shelf, inches	extension depth, inches	part number
18	6	MERGH18S
24	6	MERGH21S

Extended Handles

fits shelf, inches	extension depth, inches	part number
18	4½	MEH18S
21	4½	MEH21S
24	4½	MEH24S

Other Accessories



Bumper



Foot plate



Post Clamp



i "S" hook



i Intermediate "S" hook



Q Wedge



i Wedge



Q "S" hook



Q Intermediate "S" hook

description	part number
Bumper	9992DBX
Foot plate; stainless steel	9993S
Foot plate; zinc	9993Z
Post clamp	9994X
"S" hook	M9995
Q replacement wedges, bag of 4	MQ9985
i replacement wedges, bag of 4	MX9985
i intermediate "S" hook	MX9996
Q intermediate "S" hook	Q9995Z

MetroMax iQ[®] Casters

- For use with either MetroMax i polymer or MetroMax Q steel stem caster posts
- Promotes easy cleaning: casters allow shelving units to be moved easily for access to floors and walls
- Efficient transport: create a cart to efficiently move supplies throughout a facility or campus

Polymer Stem Casters

- Corrosion resistant performance: all-polymer horn, stainless steel axle and hardware, 5" diameter polyurethane wheel, sleeve-style axle bearing, and an optional toe-operated brake mechanism
- Bumpers included

wheel diameter, inches	tread width, inches	load capacity	type	wheel tread	part number
5	1¼	300 lbs	swivel	polyurethane	5PCX
5	1¼	300 lbs	brake	polyurethane	5PCBX
5	1¼	300 lbs	rigid	polyurethane	5PCRX
5	1¼	300 lbs	swivel	polyurethane	5PCXM*
5	1¼	300 lbs	brake	polyurethane	5PCBXM*

* Antimicrobial



5PCX



5PCBX

Standard Stem Casters

- Plated caster horns and hardware

wheel diameter, inches	tread width, inches	load capacity	type	wheel tread	part number
5	1¼	200 lbs	swivel	resilient rubber	5MX
5	1¼	200 lbs	brake	resilient rubber	5MBX
5	1¼	200 lbs	rigid	resilient rubber	5MRX
5	1¼	300 lbs	swivel	polyurethane	5MPX
5	1¼	300 lbs	brake	polyurethane	5MPBX
5	1¼	300 lbs	rigid	polyurethane	5MPRX
5	1¼	250 lbs	swivel	resilient donut	5MDXA
5	1¼	250 lbs	brake	resilient donut	5MDBXA
5	1¼	250 lbs	rigid	resilient donut	5MDRXA



5MDRXA

Stainless Steel Cart-Washable Stem Casters

- Stainless steel horn, axle, and stem with sealed bearings

wheel diameter, inches	tread width, inches	load capacity	type	wheel tread	part number
5	1¼	300 lbs	swivel	polyurethane	5MPXGSA
5	1¼	300 lbs	brake	polyurethane	5MPBXGSA
5	1¼	300 lbs	rigid	polyurethane	5MPRXGSA



5MPXGSA

Privacy

Garland's does not share your information with anyone. We are dedicated to your privacy. We do from time to time use tools to analyze our customer's movement within our site to maximize our advertising efforts.

Warranty

Garland's products are warranted against material defects as well as workmanship for 1 year from the original date of purchase unless the product has been abused, modified, not properly installed or used in an environment it is not intended for.

Approval must be given from Garland's prior to the return of any product for warranty claims. You are responsible for all shipping charges to return the product to Garland's.

If it is determined that the product is to be covered under our warranty, we reserve the right to replace the product with an equal or greater value product in place of issuing a credit. If we are replacing the product, we will pay for normal ground transportation shipping charges to the original ship to location of your order. In either event, replacement or refund of a covered warranty product, we are not responsible for shipping charges to return the product to Garland's.

If the product is deemed not covered by our warranty, we will at your request, return the product to a destination you choose at your expense.

Taxes

All applicable state and local taxes will be added to your order if you live in one of the following states:

- Colorado
- Iowa
- Minnesota
- Oklahoma
- Wisconsin

Returns

Garland's has a 20% restocking fee for all returned goods. Please contact us if you wish to make a return. The customer is responsible for all returned shipping charges.

Exchanges

Garland's policy regarding exchanges is as follows.

We will waive the 20% restocking fee if you are returning the product you ordered in error and reordering the correct product. You are responsible for all shipping charges incurred.

Payment Terms

You have two options for payment of products purchased from Garland's.

Prepayment

This is done by creating a log in on our site and using your PayPal account or our secure credit card option.

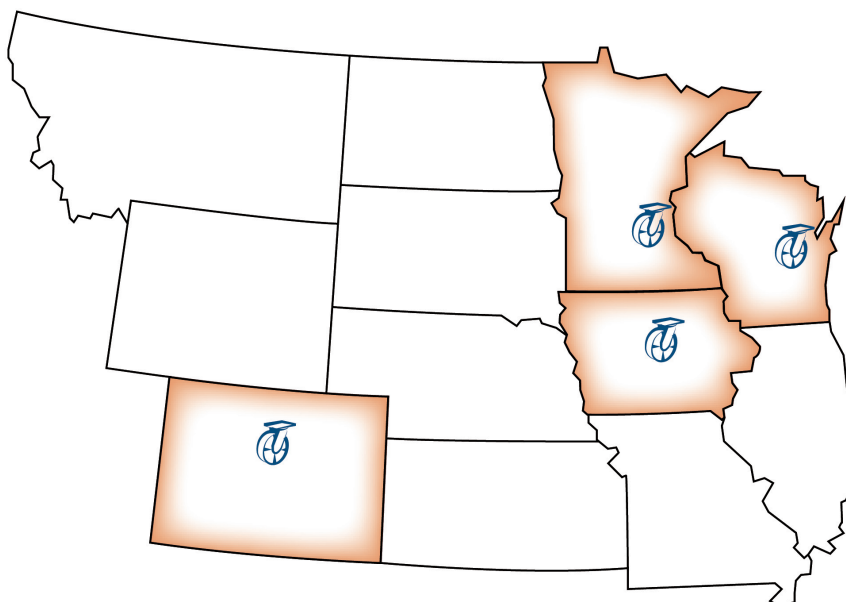
Terms

You may complete and submit our credit application for approval. Please email or fax your completed application for credit along with your tax exempt certificate, if applicable, and send to Garland's by email at sales@garlandsinc.com, or you may fax it to 612.333.3472. This process takes 1-2 business days to complete. You will be contacted by one of our members with the results of your credit request. Please contact us if it has been more than 2 business days since you submitted your application and you have not been contacted by someone from Garland's. Please keep in mind our hours are Monday-Friday 8AM-5PM C.S.T. and only days we are open for business are counted as days processing your application. If approved, your account will be set up on Net-30 terms. This means you will have 30 days from the date of our invoice to fully pay your balance. All accounts whose balance is unpaid for 30 days from the original invoice dates will be placed on credit hold and no further purchases will be permitted until the past due balance is paid in full.



Garland's Inc.
2501 26th Ave S
Minneapolis, MN 55406
612.333.3469
800.809.7888
Headquarters

Garland's Inc.
4900 East 39th Ave
Denver, CO 80207
303.388.1276
877.388.1276



The Caster Guy &
Garland's Inc.
1450 Radisson St
Green Bay, WI 54302
920.432.2928
800.472.2118

Garland's Inc.
1335 NE 50th Ave
Des Moines, IA 50313
515.244.7276
800.728.3866

Over 5000 manufacturers within your reach — Call us for all your material handling needs



Bulk Bins



Pallet Jacks



Drum Cradles



Carts



Machine Movers



Rubbermaid



Tilt Trucks



1450 Radisson St | Green Bay, WI 54302
Toll free: 800.472.2118 | Phone: 920.432.2928 | Fax: 920.432.8065
www.thecasterguy.com